

NOTES

1. NEW WALL
2. NEW DOOR - INTERIOR
3. NEW FINISH FLOOR
4. NEW COUNTERTOP
5. NEW PLUMBING FIXTURE EQUAL TO IEI OR BETTER
6. NEW WALL INFILL
7. NEW CABINETS
8. NEW STAIR TREAD FINISH
9. NEW SHOWER ENCLOSURE
10. NEW HANDRAIL
11. NEW DOOR, CABINETS/PREPLACE

WALL TYPES:

- 101 EXTERIOR WALL
2X6 W/DF FRAMING FILLED WITH THERMAL INSULATION TO MEET R-21
EXTERIOR FINISH: SHIP-LAP SIDING OVER RAIN SCREEN
INTERIOR FINISH: MATCH THE EXISTING CONDITION
- 102 INTERIOR PARTITION WALL
2X4 W/DF FRAMING FILLED WITH SOUND PROOF INSULATION
FINISH: MATCH THE EXISTING CONDITION
- 103 INTERIOR PARTITION WALL
2X6 W/DF FRAMING FILLED WITH SOUND PROOF INSULATION
FINISH TO MATCH THE EXISTING CONDITION

Detection required in all sleeping areas, outside of sleeping areas within 21' of the door and on every level of a dwelling unit.

Floor area exceeding 1000 square feet are required to have one smoke detector every 500 square feet.

Audible requirements: 15 dB above average sound level and a minimum of 75 dBA in the sleeping areas.

UL Listing:
Smoke Alarms- UL 268
CO Alarms- UL 2075
Combo Alarms- UL 2075 and 268
Control Unit- UL 985

All alarms must be interconnected. This includes remodel work. This may be done with UL listed wireless connections.

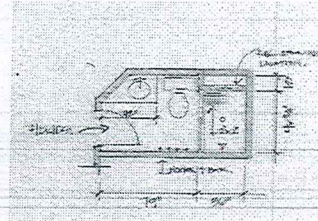
Do not install smoke alarms in bathrooms (must be 3' away from the doorway), kitchens (must be 6' away horizontally from cooking appliances) or garages.

Some detector shall be located at the highest point of the ceiling. (Not less than 4" vertically or more than 36" horizontally of the peak)
Detector shall not be located within 36" of the tip of fan blades are near air ducts or returns.

Stairs leading from the basement shall have detectors mounted on the ceiling near the entry to the stair.

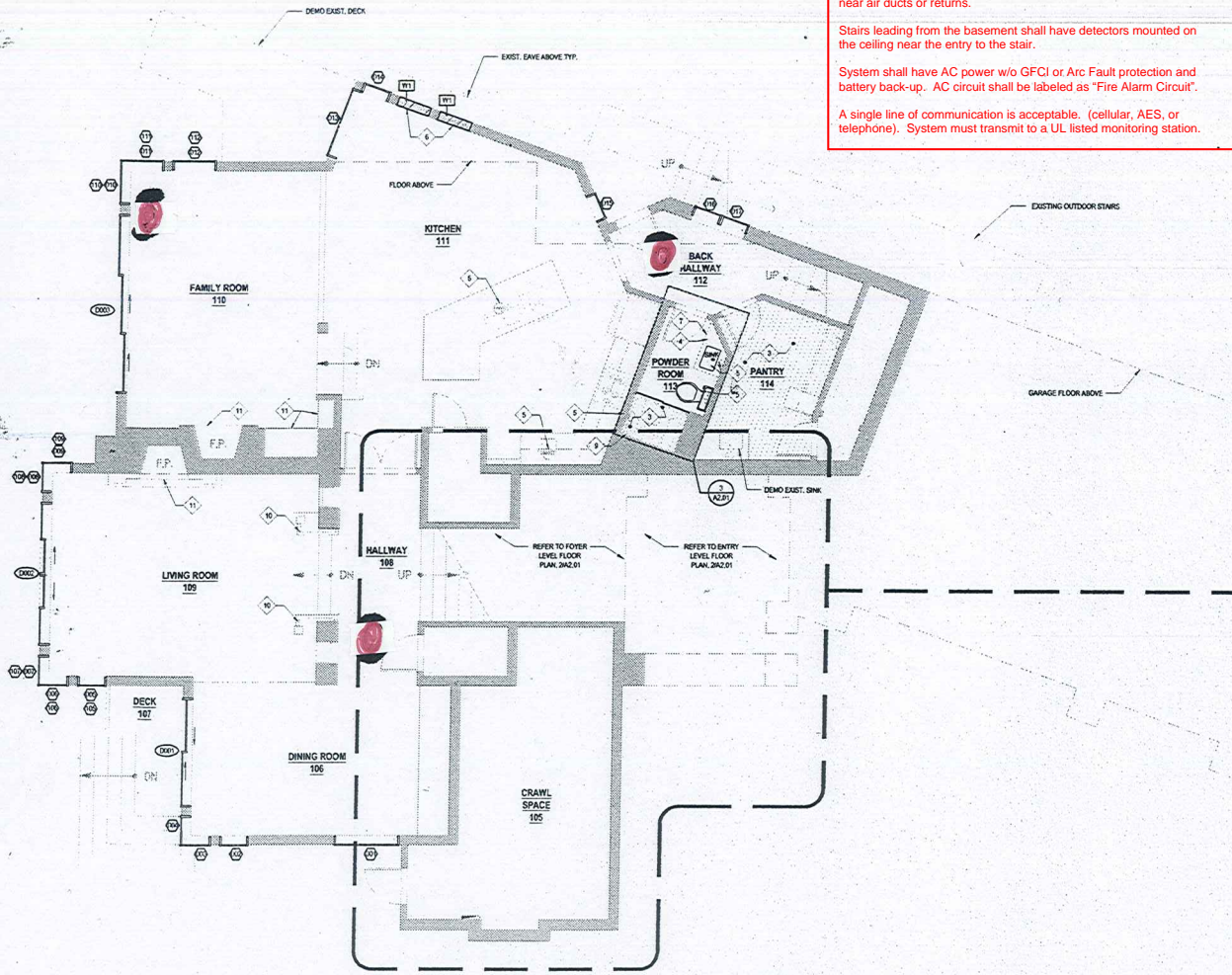
System shall have AC power w/o GFCI or Arc Fault protection and battery back-up. AC circuit shall be labeled as "Fire Alarm Circuit".

A single line of communication is acceptable. (cellular, AES, or telephone). System must transmit to a UL listed monitoring station.

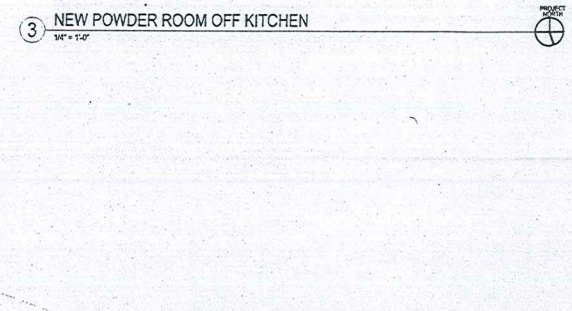


ROBERT EDSON SWAIN
ARCHITECTURE + DESIGN
2200 W COMMODORE WAY
SEATTLE, WA 98199

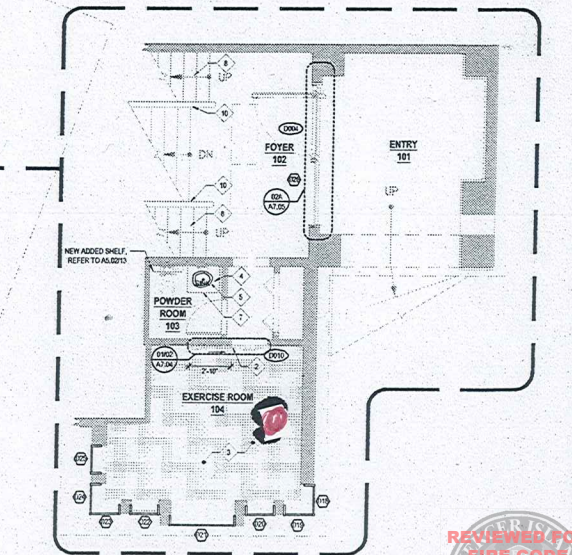
DESIGN DEVELOPMENT



① LOWER LEVEL FLOOR PLAN
1/4" = 1'-0"



③ NEW POWDER ROOM OFF KITCHEN
1/4" = 1'-0"



② ENTRY LEVEL FLOOR PLAN
1/4" = 1'-0"



September 10, 2020

STAIRHOUSE
9226 SE 33RD PLACE
MERCER ISLAND, WA 98040
Robert Edson Swain, Inc. Seattle, Washington © 2020

PROJECT NO.:	
DRAWN:	
ISSUE:	DATE:
REVISIONS:	DATE:

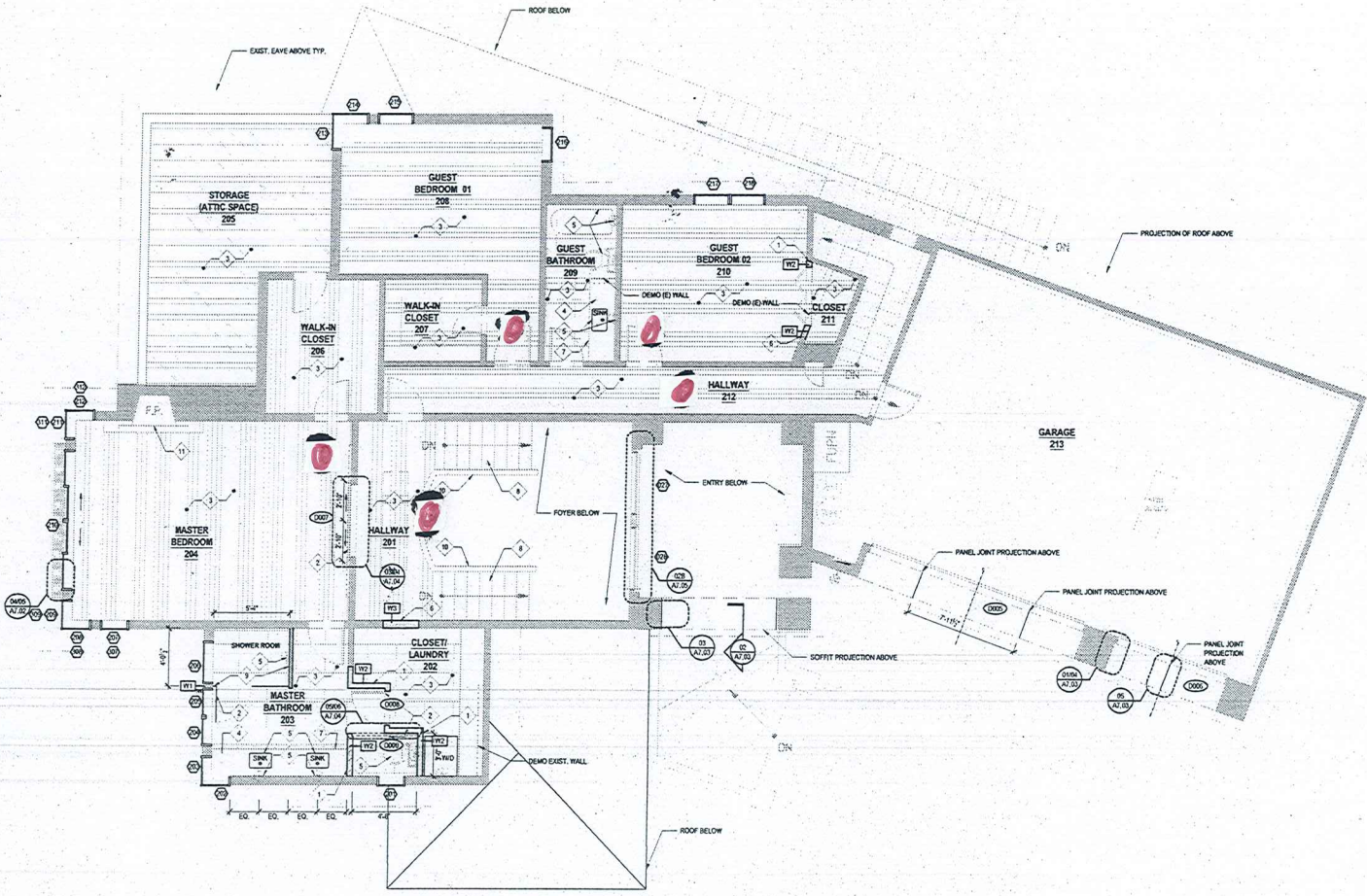
FLOOR PLAN
A2.01

NOTES

1. NEW WALL
2. NEW FLOOR- INTERIOR
3. NEW FINISH FLOOR
4. NEW COUNTERTOP
5. NEW PLUMBING FIXTURE EQUAL TO (E) OR BETTER
6. NEW WALL INFL
7. NEW CABINETS
8. NEW STAR TREAD FINISH
9. NEW SHOWER ENCLOSURE
10. NEW HANDRAIL
11. NEW DOOR- CABINETS/STAIRPLACE

WALL TYPES:

- W1** EXTERIOR WALL
2X6 W/2 FRAMING FILLED WITH THERMAL INSULATION TO MEET R-21
EXTERIOR FINISH: DISPLAY SOUND BARRIER SCREEN
INTERIOR FINISH: MATCH THE EXISTING CONDITION
- W2** INTERIOR PARTITION WALL
2X4 W/2 FRAMING FILLED WITH SOUND PROOF INSULATION
FINISH: MATCH THE EXISTING CONDITION
- W3** INTERIOR PARTITION WALL
2X6 W/2 FRAMING FILLED WITH SOUND PROOF INSULATION
FINISH TO MATCH THE EXISTING CONDITION



1 UPPER LEVEL FLOOR PLAN
1/8" = 1'-0"

PROJECT NO.:	
DRAWING	
ISSUE	DATE
REVISIONS	DATE



September 10, 2020

DSC

From Tyco Security Products

with
PowerG
Technology

PowerSeries Neo Control Panels

HS2016, HS2032, HS2064, HS2128

Compatible with:



Features That Make a Difference:

- 16 to 128 zone panel configurations
- **PowerG** – robust, industry leading commercial grade wireless
- Simple partition management using Global keypads
- Compatible with Alarm.com home automation solutions with built-in Z-Wave capabilities through dual-path LTE/Internet and HSPA (3G)/Internet communicators
- Intuitive, quick installation
- User-friendly interfaces
- Visual alarm verification
- 2-way audio alarm verification via phone or cellular
- Alternate Communications via Cellular and IP
- Local and Remote Downloading
- Cost efficiencies through advanced system software
- 128 bit AES encryption (wireless, communicator & BUS)
- Remote firmware upgrade (panel/keypads/transceiver)

PowerSeries Neo is Security Redefined

PowerSeries Neo by DSC redefines intrusion security by combining the flexibility of a modular, hardwired system with the simplicity of a wide range of wireless devices and peripherals, resulting in the most comprehensive hybrid system available in the market today.

This brand new and exceptionally flexible platform leverages the superior capabilities of **PowerG** – the industry's leading-edge wireless intrusion technology. Innovative alarm verification solutions, together with an exceptionally comprehensive remote service software suite, make PowerSeries Neo the ideal first-class solution for residential and scalable commercial installations.

Bringing Home Closer

PowerSeries Neo is compatible with Alarm.com to deliver best in class smart home control and monitoring solutions. Anticipating future needs for a connected home, with infinite opportunities to maximise the system, PowerSeries Neo becomes an undisputed first-class investment.

PowerSeries Neo Revolutionary Control Panels with Flexible Scalability & Expansion

PowerSeries Neo control panels are the heartbeat to this revolutionary hybrid system. DSC offers four control

panels in the PowerSeries Neo portfolio, ranging in capacity from 16 to 128 zones and two to eight partitions, providing solutions for the spectrum of installations. Each control panel starts with six or eight hardwired inputs, two- four hardwired outputs and PSTN communication onboard. The system can be tailored for specific installations with added expansion capabilities, features and services. The modular and scalable structure of PowerSeries Neo provides a cost effective, tailored solution for even the most demanding installations. It includes a complete line of expansion modules to fit the requirements of today's installations while protecting the investment and ensuring growth in the future.

New Management System Software Custom Designed to Make Installation & Maintenance a Breeze

PowerSeries Neo introduces the most comprehensive suite of support software in the industry, designed specifically to help security professionals significantly cut time and cost invested in the installation and maintenance of the system.

The suite includes DLS5 Downloading Software, Routine System Management for remote diagnostics, inspections and maintenance, and WebSA System Administrator Software for professional end-user system management.



From Tyco Security Products

Innovative Alarm Verification Solutions Reduce False Alarms & Unnecessary Site Checks

PowerSeries Neo utilizes innovative, regionally compliant alarm verification solutions such as visual verification, two-way audio verification and sequential detection, greatly reducing incremental costs that can be incurred by false alarms, while adding to the security professional's RMR. Leveraging powerful support software, an accurate remote assessment is made of the situation inside the premises when an alarm is triggered by a burglary attempt, fire or other emergency. This eliminates the need for unnecessary site checks – ultimately saving time and cost while enabling responders to be alerted about any potentially dangerous situations.

Flexible Communications Offer Ultimate Peace of Mind

As traditional phone lines become less common and more users choose VoIP or mobile phones, PowerSeries Neo offers optional Cellular and/or IP communication methods. When connected to any PowerSeries Neo control panel, alarm reporting paths can be combined through the Public Switched Telephone Network (PSTN) if so desired, plus Cellular and/or IP channels. The PowerSeries Neo communicators can conveniently utilize the Cellular and/or IP network as a primary or back-up communication path to ensure high speed, reliable and secure alarm communications. The integrated communicators also allow security professionals to offer RMR services such as alarm verification, even in instances where a traditional phone line is not present.

The Power of PowerG:

The power behind PowerSeries Neo lies in various innovative technologies, including the revolutionary **PowerG**, which, bundled together, provide a robust and feature-rich platform designed to reduce operational costs for dealers and provide ultimate reliability for end users.

- Multichannel, **Frequency Hopping Spread Spectrum** technology enables the system to hop between wireless frequency channels to ensure the seamless transmission of secure communications between the devices and the control panel.
- **Adaptive Transmission Power** translates into up to eight years of battery life for the system's devices and peripherals, reducing battery- replacement incurred costs.
- **High transmission ranges** allow for devices to reliably communicate within up to 2km/1.24 miles line-of-sight, therefore reducing the cost of installing additional repeaters to service larger premises.
- **TDMA synchronized communication technology** prevents messages from colliding by splitting channels into various time slots, allowing for an increased amount of data transmission and ensuring that devices are able to consistently communicate when needed.
- **128 bit AES encryption** offers exceptionally high level of protection against analysis tools and digital attacks.

Compatibility

PowerSeries Neo Hardwired Keypads

Full Message LCD Hardwired Keypad	HS2LCD
Full Message LCD Hardwired Keypad with Prox Support	HS2LCDP
ICON Hardwired Keypad.....	HS2ICN
ICON Hardwired Keypad with Prox Support	HS2ICNP
Hardwired 7 inch Touch Screen Keypad with Prox Support.....	HS2TCHP
Hardwired 7 inch Touch Screen Keypad with Prox Support Black	HS2TCHPBLK

PowerSeries Neo Hardwired Keypads with Built-In PowerG 915Mhz Wireless Transceiver

Full Message LCD Hardwired Keypad with Built-in Transceiver - 915Mhz.....	HS2LCDRF9
Full Message LCD Hardwired Keypad with Built-in Transceiver and Prox Support - 915Mhz	HS2LCDRFP9
ICON Hardwired Keypad with built-in Transceiver - 915Mhz	HS2ICNRF9
ICON Hardwired Keypad with Prox Support and built-in Transceiver - 915Mhz	HS2ICNRF9P

PowerSeries Neo PowerG Wireless Keypads

Wireless Full Message LCD keypad - 915Mhz	HS2LCDWF9
Wireless Full Message LCD keypad with Prox Support - 915Mhz.....	HS2LCDWFP9
Wireless Full Message LCD keypad with Prox Support and Voice Prompting - 915Mhz.....	HS2LCDWFPV9
Wirefree deskmount stand with transformer.....	HS2LCDWFDMK

PowerSeries Neo PowerG Standalone Transceivers

Note: keypad with built-in transceiver modules are listed **PowerG** – Transceiver Modules

PowerG – Host Standalone Transceiver Module - 915Mhz	HSM2HOST9
---	-----------

PowerG Wireless Devices

Smoke Detector.....	PG9926
Smoke and Heat Detector	PG9916
CO Detector.....	PG9913
PIR Motion Detector.....	PG9914
PIR Motion Detector with Integrated Camera.....	PG9934P ¹
PIR Curtain Motion Detector	PG9924
Dual-Tech (PIR & MW) Motion Detector	PG9984P ¹
Mirror PIR Motion Detector.....	PG9974P ¹
Outdoor PIR Motion Detector	PG9994
Outdoor PIR Motion Detector with Integrated Camera.....	PG9944
Glass Break Detector	PG9922
Shock Sensor	PG9935
Flood Detector	PG9985
Temperature Detector	PG9905
Optional External Waterproof Temperature Probe for Outdoor Refrigeration Measurment	(PGTEMP-PROBE)
4-Button Wireless Key ²	PG9929; PG9939
Indoor Siren.....	PG9901
Outdoor Siren.....	PG9911
Repeater	PG9920
Door/Window Contact with Auxilliary Input	PG9945
Door/Window Contact	PG9975
Single Button Panic Key ²	PG9938
2-Button Wireless Key ²	PG9949

¹Includes Pet Immunity

²maximum 32 devices maximum any combination

PowerSeries Neo Power Supplies and High & Low Current Output Expansion

Power Supply Module	HSM2300
High Current Output Module.....	HSM2204
Output Module.....	HSM2208
Two-Way Audio Module	HSM2955
Stand-Alone Audio Station.....	PC5961E
Large Speaker Station.....	PC5964E

PowerSeries Neo Hardwired Expansion

8 Zone Expander Module.....	HSM2108
-----------------------------	---------

Alternate Communicator Options

HSPA Cellular Alarm Communicator	3G2080E
HSPA Cellular Alarm Communicator with RS422 Integration.....	3G2080RE
LTE/Internet Dual-Path Alarm Communicator with image sensor, compatible with Alarm.com services (US only).....	TL880LTVZ
HSPA/Internet Dual-Path Alarm Communicator with image sensor, compatible with Alarm.com services (LATAM only).....	TL8803GTF-LAT
HSPA/Internet Alarm Communicator with image sensor, compatible with Alarm.com services (LATAM only).....	TL8803GCO-LAT



From Tyco Security Products

HSPA/Internet Dual-Path Alarm Communicator with image sensor, compatible with Alarm.com services (Canada only).....	TL8803GRG
HSPA/Internet Dual-Path Alarm Communicator with image sensor, compatible with Alarm.com services (Peru only).....	TL8803GITF-PE
Internet Alarm Communicator	TL280E
Internet Alarm Communicator with RS422 Integration	TL280RE
Internet and HSPA Dual-Path Alarm Communicator with RS422 Integration.....	TL2803GRE
Internet and HSPA Dual-Path Alarm Communicator	TL2803GE
Communicator Remote Mounting Module	PCL-422

Note: Please refer to www.dsc.com for a complete list of alarm.com compatible products

Control Panel Specifications

Power Supply.....	16.5 VAC/40 VA @ 50/60 Hz
Current Draw (Panel)	85mA (Nominal)
Auxiliary Output.....	13.75 +/- 5% Vdc/700mA
Bell Output.....	13.75 +/- 5% Vdc/700mA
Operating Environment	32° to 120° F (0° to 49° C)
Relative Humidity.....	93%

Control Panel Approval Listings

FCC/IC, UL/ULC, SIA CP-01, CSFM, CNC, Anatel

Note: Please refer to www.dsc.com for the most current approval listings.

PowerSeries Neo Feature Comparison Chart

Features	HS2016	HS2032	HS2064 E	HS2128 E
Number of On-Board Zones	6	8	8	8
Total Zones Supported	16	32	64	128
Keypad Zone Expansion	Yes	Yes	Yes	Yes
Hardwired Zone	Yes	Yes	Yes	Yes
Wireless Zone Expansion	Yes	Yes	Yes	Yes
Number of Hardwired Keypads	8	8	8	16
Number of Wireless Keypads	8	8	8	16
Number of Wireless Receivers	1	1	1	1
Number of Wireless Repeaters	4	8	8	8
On-Board PGM Outputs	2	2	4	4
Number of Main Panel Low-Current PGM Outputs	1	1	1	1
Number of Main Panel High-Current PGM Outputs	1	1	3	3
PGM Expansion	Yes	Yes	Yes	Yes
Number of Additional High-Current PGM Outputs	4	4	12	16
Number of Additional Low-Current PGM Outputs	16	32	64	128
Number of Access Codes	47 + master	71 + master	499 + master	999 + master
Number of Partitions	2	4	8	8
Panel Event Buffer	500	500	500	1000
Phone Line Supervision	Yes	Yes	Yes	Yes
Siren Supervision	Yes	Yes	Yes	Yes
Bell Output	Yes	Yes	Yes	Yes
SIA CP-01 Compliant	Yes	Yes	Yes	Yes
SMS Command and Control	Yes	Yes	Yes	Yes
Upload/Download Support	Yes	Yes	Yes	Yes
Direct-Connect (PC Link) Downloading Support	Yes	Yes	Yes	Yes
DLS SA End-User Downloading Support	Yes	Yes	Yes	Yes
Internet Alarm Communications	Yes	Yes	Yes	Yes
Audio Alarm Verification	with HSM2955(R)	with HSM2955(R)	with HSM2955(R)	with HSM2955(R)
Cellular Alarm Communications	Yes	Yes	Yes	Yes
Battery Required	Yes	Yes	Yes	Yes

DSC

From Tyco Security Products

with
PowerG
Technology

DSC PowerG 2-Way Wireless Keypad HS2LCDWF(P)(V)9



Features That Make a Difference:

- Wireless full message LCD PowerG 2-way wire-free keypad
- Optional Mini Prox Tag (MPT) support
- Multiple language support
- Optional voice prompting
- Verbal door chime
- Up to 16 keypads per system

Power Series Neo is Security Redefined

Power Series Neo by DSC redefines intrusion security by combining the flexibility of a modular, hardwired system with the simplicity of a wide range of wireless devices and peripherals, resulting in the most comprehensive hybrid system available in the market today.

The Power of PowerG:

The power behind Power Series Neo lies in various innovative technologies, including the revolutionary PowerG, which, bundled together, provide a robust and feature-rich platform designed to reduce operational costs for dealers and provide ultimate reliability for end-users.

- Multichannel, Frequency Hopping Spread Spectrum technology enables the system to hop between wireless frequency channels to ensure the seamless transmission of secure communications between the devices and the control panel.

- Adaptive Transmission Power translates into up to eight years of battery life for the system's devices and peripherals, reducing battery replacement-incurred costs.
- High transmission ranges allow for devices to reliably communicate within up to 2km/1.24 miles line-of-sight, therefore reducing the cost of installing additional repeaters to service larger premises.
- 1TDMA synchronized communication technology prevents messages from colliding by splitting channels into various time slots, allowing for an increased amount of data transmission and ensuring that devices are able to consistently communicate when needed.
- 128 bit AES encryption offers an exceptionally high level of protection against analysis tools and digital attacks.
- Wireless Full Message LCD PowerG 2-Way Wire-Free Keypad



From Tyco Security Products

Specifications:

Ordering Information :

- HS2LCDWF4..... Wireless PowerG Keypad 433 MHZ
- HS2LCDWFP4Wireless PowerG Keypad
433 MHZ w/ prox
- HS2LCDWFPV4Wireless PowerG Keypad
433 MHZ w/ prox and voice
- HS2LCDWF8..... Wireless PowerG Keypad 868 MHZ
- HS2LCDWFP8Wireless PowerG Keypad
868 MHZ w/ prox
- HS2LCDWFPV8Wireless PowerG Keypad
868 MHZ w/ prox and voice
- HS2LCDWF9 Wireless PowerG Keypad 915 MHZ
- HS2LCDWFP9+Wireless PowerG Keypad
915 MHZ w/ prox
- HS2LCDWFPV9Wireless PowerG Keypad
915 MHZ w/ prox and voice

- HS2LCDWFDKM Optional desk stand with transformer
- Plastic enclosure
protection degree: IP30
- Dimensions:..... 168mm x 122mm x 25 mm
(6 39/64" x 4 51/64" x 63/64")
- Battery: 4 AA, 1.5V
- Board Current Draw: 30mA (standby) 105 mA (max)
- Operating Environment: -10°C to 55°C (14°F to 131°F)
- Relative Humidity: 5 to 93%

Approvals:

Please refer to www.dsc.com for the most current approval listings.
Plastic enclosure protection degree: IP30

Compatibility:

The HS2LCDWF(P)(V) is compatible with all Power Series Neo control panels with a transceiver.

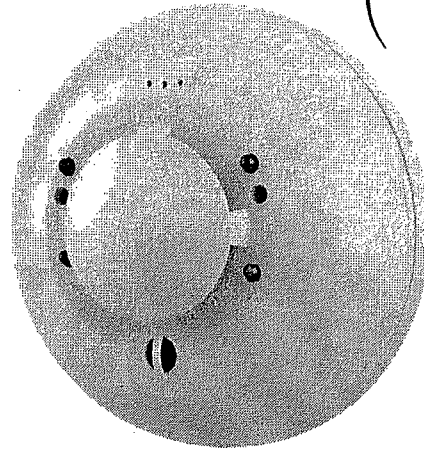
PowerSeries Neo is Security Redefined

PowerSeries Neo by DSC redefines intrusion security by combining the flexibility of a modular, hardwired system with the simplicity of a wide range of wireless devices and peripherals, resulting in the most comprehensive hybrid system available in the market today.

This brand new and exceptionally flexible platform leverages the superior capabilities of PowerG – the industry’s leading-edge wireless intrusion technology. Innovative alarm verification solutions, together with an exceptionally comprehensive remote service suite, make PowerSeries Neo the ideal first-class solution for residential and scalable commercial installations.



i⁴ Series Combination CO/Photoelectric Smoke Detector



Best-in-class carbon monoxide (CO) and smoke detection technology in a single, system-connected device.

Features

- Single device for CO and smoke detection that uses less wiring and fewer junction boxes
- Compatible with a wide range of control panels with the use of the required i⁴ Interface Module.
- Sends distinct smoke and CO signals to the panel
- Sounds Temporal 3 for smoke and Temporal 4 for CO
- Built-in 85dB sounder
- LEDs display both CO and smoke status
- External IR LED provides extended range sensitivity testing
- Versatile mounting allows for wall or ceiling placement
- Easily replaceable electrochemical CO cell with 6-year end-of-life timer that signals the panel and chirps to alert the homeowner
- RealTest[®] enables functional test using canned CO
- Drift compensation and smoothing algorithms provide false alarm immunity
- Compatible with SENS-RDR sensitivity tester
- Full agency compliance with UL 268 and UL 2075

Integration: The i⁴ Series combines CO and smoke detection into one device, requiring less wiring and fewer back boxes than two separate devices. The i⁴ Series is compatible with i³ (2WTA-B or 4WTA-B), so an attractive CO monitoring solution can easily be retrofitted into existing i³ installations. The i⁴ Series CO cell can be easily replaced at end-of-life, resulting in a much lower life cost than having to replace the entire detector.

Installation ease: The i⁴ Series Combination CO/Smoke detector requires less wiring than two separate CO and smoke devices. Installers can pre-wire its plug-in base, while its large wire-entry port and in-line terminals provide ample room for neatly routing wiring. The base accommodates several back box options and also direct mounts using drywall anchors. The i⁴ head plugs into the base with a simple Stop-Drop 'N Lock™ action. When the detector's CO cell reaches end-of-life, it can be easily replaced in the field without a tool.

Intelligence: With the help of the module, the i⁴ Series transmits distinct CO and smoke signals, allowing appropriate response from the central monitoring station. Intelligent features, such as drift compensation and smoothing algorithms, reduce nuisance alarms.

Instant Inspection: The i⁴ Series LEDs enable instant inspection of detector status signaling normal/standby condition, alarm condition, maintenance/trouble condition or functional test mode. 2-wire devices allow loop testing via the EZ Walk feature where wiring can easily be verified by checking the LED status at each detector.

Smoke sensitivity can be easily measured using the wireless SENS-RDR device. CO cell functionality can also be quickly validated in the field with canned CO per NFPA 720: 2009 requirements using the detector's RealTest functionality.

Agency Listings



S268

1653:0227

i⁴ Series Combination CO/Smoke Detector Specifications

Carbon monoxide (CO)/Smoke detector shall be a System Sensor model number COSMO-2W (2-Wire) / COSMO-4W (4-Wire) listed to UL 268 for Fire Protection Signaling Systems and to UL 2075 for Carbon Monoxide Gas Detection. The detector shall be photoelectric smoke sensing and electrochemical CO sensing and equipped with a sounder capable of Temp 3 and Temp 4 audible signals. The detector shall have nominal sensitivity of 2.5 percent per foot as measured in the UL smoke box. The detector shall be capable of automatically adjusting its sensitivity by means of drift compensation and smoothing algorithms. The detector's base shall be able to mount to a single-gang electrical box or direct (surface mount) to the wall or ceiling. Wiring connections shall be made by means of SEMS screws. The detector shall provide LED indication that blinks to indicate normal standby, smoke alarm, smoke maintenance, CO alarm, CO trouble/end-of-life. When the detector is in CO trouble condition, it shall send a trouble signal to the panel. The detector shall provide a means to test CO gas entry into the CO sensing cell. The detector shall provide this with a test mode that accepts CO gas from a test agent and alarms immediately upon sensing CO entry. The 2-wire model shall include a maintenance signal to indicate the need for maintenance at the alarm control panel and shall provide a loop testing capability to verify the circuit without testing each detector individually. The detector shall have a replaceable CO cell that can be replaced at end of cell life.

Electrical Specifications

Operating Voltage (VDC):	Nominal: 12/24; Minimum: 8.5; Maximum: 35
Maximum Standby Current:	50 μ A
Maximum Alarm Current:	2-Wire 50mA; 4-Wire 40mA
Audible Signal:	85 dBA
Maximum Reverse Polarity Current:	20 mA
Maximum Start-up Current:	200 μ A
Maximum Start-up Capacitance:	.10 μ F

Physical Specifications

Dimension:	Diameter: 5.5"; Depth: 2.5" (includes base)
Weight:	9.2 oz. (261 g)
Operating Temperature Range:	0 – 50° C (32 – 122° F)
Operating Humidity Range:	20-95% RH
Storage Temperature Range:	-10 – 70° C (14 – 158° F)
Sensitivity:	2.5%/ft nominal
Input Terminals:	14 to 22 AWG
Mounting:	Back boxes: 3.5" and 4" Octagonal; Single-gang; 4" Square; 2 x 4", 3.5" and 4" round ceiling. Direct mount to wall or ceiling.

Operation Modes / LED Status	Green	Red	Blue	Sounder
Alarm Smoke:	Off	On	Off	Temp 3
Alarm CO:	Off	Off	On	Temp 4
Alarm Smoke & CO:	Off	On	On	Temp 3
Power Up:	Blink 5 sec.	Blink 5 sec	Blink 5 sec.	Off
Standby:	Blink 5 sec.	Off	Off	Off
RealTest® Mode (CO):	Off	Off	Blink 1 sec.	Off
After CO is Sprayed:	Off	Off	On	Temp 4
Smoke Maintenance:	Off	Blink 5 sec.	Off	Off
CO Trouble:	Off	Off	Blink 5 sec.	Off
End-of-Life:	Off	Off	Blink 5 sec.	Intermittent